

Chem 150, Spring 2015

Unit 11 - Carbohydrates

Introduction

- Biomolecules include
 - ✦ Proteins
 - ✦ Nucleic acids
 - ✦ **Carbohydrates**
 - ✦ Lipids
- Some can be quite large and complex, but comprise a limited number of elements (C,H,O) arranged in predictable patterns.
- Simple sugars share a common empirical formula $(CH_2O)_n$

Chem 150, Unit 10: Proteins 2

Introduction

- Simple sugars share a common empirical formula $(CH_2O)_n$



Chem 150, Unit 10: Proteins 3

Introduction

- Simple sugars share a common empirical formula $(CH_2O)_n$



Chem 150, Unit 10: Proteins 3

15.1 Monosaccharides

- Carbohydrates are used for fuel in cells..
- Monosaccharides, or simple sugars, are the building blocks of carbohydrates.
- Monosaccharides contain carbon, hydrogen and oxygen in a 1:2:1 ratio and are classified based on the number of carbons.

TABLE 15.1 Formulas of Common Monosaccharides

Type of Monosaccharide	Number of Carbon Atoms	Molecular Formula	Examples
Triose	3	$C_3H_6O_3$	Glyceraldehyde
Tetrose	4	$C_4H_8O_4$	Erythrose
Pentose	5	$C_5H_{10}O_5$	Ribose, arabinose, xylose
Hexose	6	$C_6H_{12}O_6$	Glucose, fructose, galactose, mannose

Chem 150, Unit 11: Carbohydrates 4

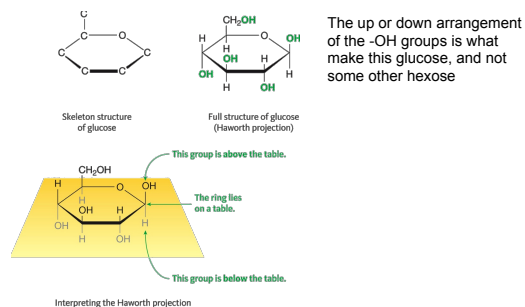
Monosaccharides in Our Bodies

- Most monosaccharides in our bodies:
 - Many exist as a five- or six-membered ring of atoms
 - One of the atoms in the ring is an oxygen and the rest are carbon
 - Any carbon not included in the ring is attached to the ring carbons nearest the oxygen
 - All but one of the carbon atoms are bonded to an hydroxyl group

Chem 150, Unit 11: Carbohydrates 5

Haworth Projections

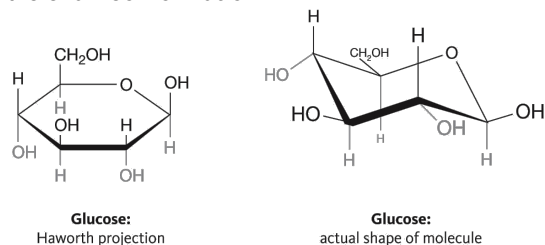
- Haworth projections are a common way to visualize a simple sugar



Chem 150, Unit 11: Carbohydrates 6

The Actual Shape of Glucose

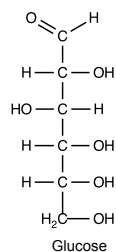
- The Haworth projection does not accurately portray the actual shape of a sugar. If the sugar is a 6-membered ring, it actually adopts what is known as the **chair conformation**.



Chem 150, Unit 11: Carbohydrates 7

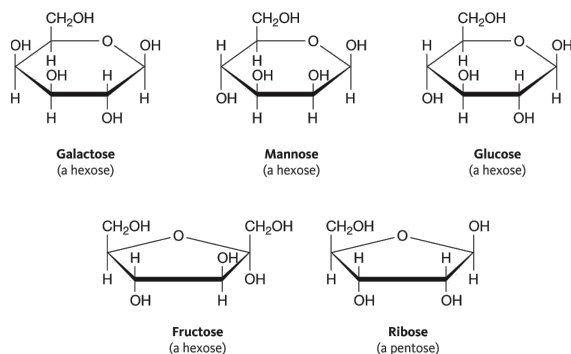
The Actual Shape of Glucose

- Monosaccharides can also have an open structure.



Chem 150, Unit 11: Carbohydrates 8

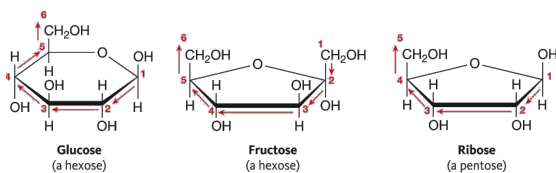
Common Monosaccharides



Chem 150, Unit 11: Carbohydrates 9

Numbering Carbon Atoms

- Number carbon atoms from the right side beginning with the carbon that is not part of the ring (if any) or beginning with the rightmost carbon in the ring.



Chem 150, Unit 11: Carbohydrates 10

Physical Properties

- Because of the similarity in structures, all of the monosaccharides have similar physical properties, including high melting points, high solubility in water and low solubility in organic solvents.
- The boiling points of sugars are so high that they break down into carbon and water when they are heated rather than boiling.

TABLE 15.2 The Properties of Four Hexoses

	Glucose	Galactose	Mannose	Fructose
Melting point	150°C	167°C	133°C	103°C
Solubility in water	900 g/L	2000 g/L	2500 g/L	3700 g/L
Heat of combustion	3.72 kcal/g	3.70 kcal/g	3.73 kcal/g	3.73 kcal/g

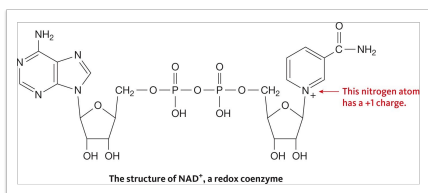
Chem 150, Unit 11: Carbohydrates 11

Energy Sources and Taste

- Our bodies can use any of the common hexoses for energy, but prefer to use glucose. Every cell in our bodies can use glucose for energy
- We also perceive taste differences in the common hexoses. Fructose tastes twice as sweet as glucose and more than five times sweeter than galactose or mannose.

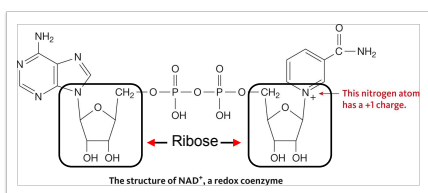
Monosaccharides for Larger Molecules

- Many monosaccharides are found as part of a larger molecule, rather than individually.
 - ✦ Galactose and mannose are used to build cell membranes components and are rarely found free.
 - ✦ Ribose is used in nucleic acids and a few coenzymes



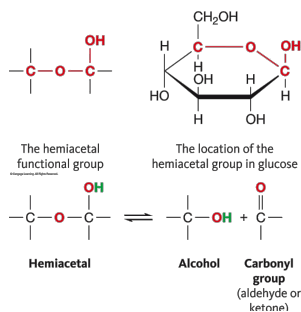
Monosaccharides for Larger Molecules

- Many monosaccharides are found as part of a larger molecule, rather than individually.
 - ✦ Galactose and mannose are used to build cell membranes components and are rarely found free.
 - ✦ Ribose is used in nucleic acids and a few coenzymes



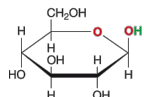
15.2 Isomeric Forms of Monosaccharides: Anomers and Enantiomers.

- Monosaccharide rings easily open because they contain a hemiacetal group.

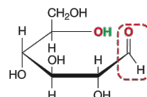


Aldoses and Ketoses

- Glucose opens to form an aldehyde, and is thus known as an aldose.



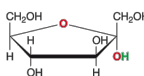
The ring form of glucose



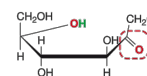
The open-chain form of glucose

The open-chain form of glucose contains an aldehyde group, so glucose is an aldose.

- Fructose opens to form a ketone, and is thus known as a ketose.



The ring form of fructose



The open-chain form of fructose

The open-chain form of fructose contains a ketone group, so fructose is a ketose.

Benedict's Test

- When dissolved in water, there is an equilibrium between the ring and the open form of the sugar.
- Open chain aldoses oxidize easily using Benedict's reagent:

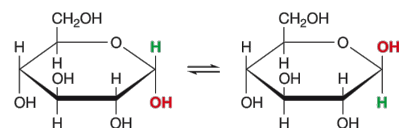
$$\text{C}_6\text{H}_{12}\text{O}_6 (\text{aq}) + 2 \text{Cu}^{2+} (\text{aq}) + 5 \text{OH}^- (\text{aq}) \longrightarrow \text{C}_6\text{H}_{11}\text{O}_7^- (\text{aq}) + \text{Cu}_2\text{O} (\text{s}) + 3 \text{H}_2\text{O} (\text{l})$$

glucose Benedict's solution (blue) gluconate brick red ppt.

 - This reaction is used to test for the presences of sugar in the urine of diabetics.
- Sugars that react in the Benedict's test are called reducing sugars.
- All aldoses react; also fructose (a ketone) reacts because it easily converts into glucose in a basic solution.

Anomers

- D-glucose is the naturally occurring form of glucose and is present as a mixture of anomers.
- Anomers are sugars that differ in the position of the OH in the hemiacetal group.

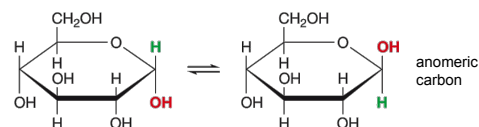


α-D-Glucose
(the OH in the hemiacetal group is down)

β-D-Glucose
(the OH in the hemiacetal group is up)

Anomers

- D-glucose is the naturally occurring form of glucose and is present as a mixture of anomers.
- Anomers are sugars that differ in the position of the OH in the hemiacetal group.

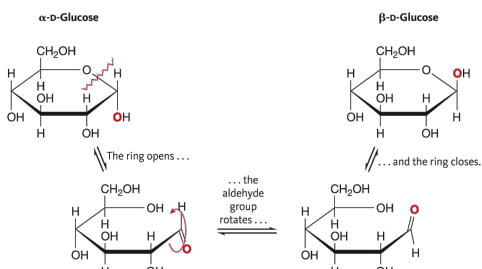


α-D-Glucose
(the OH in the hemiacetal group is down)

β-D-Glucose
(the OH in the hemiacetal group is up)

Mutarotation

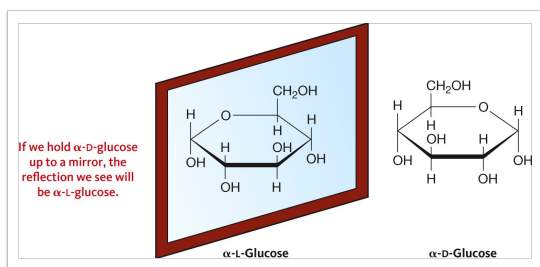
- The α - and β -anomers interconvert because the hemiacetal opens and closes rapidly in an aqueous solution.



Chem 150, Unit 11: Carbohydrates 18

Enantiomers

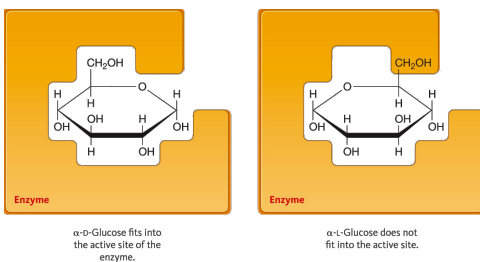
- D-glucose has several chiral atoms, so it has an enantiomer (a non-superimposable mirror image) known as L-glucose.



Chem 150, Unit 11: Carbohydrates 19

L-Glucose vs D-Glucose

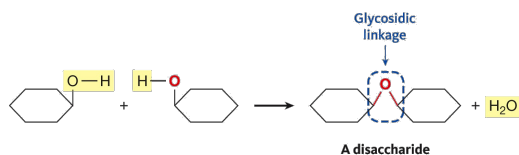
- While L- and D-glucose have nearly identical physical and chemical properties, enzymes (which are chiral themselves) can distinguish the difference.



Chem 150, Unit 11: Carbohydrates 20

15.3 Disaccharides and the Glycosidic Linkage

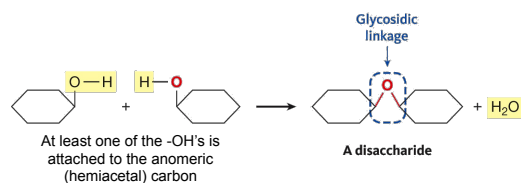
- Most monosaccharides are found bonded to other compounds or to other monosaccharides.
- Two monosaccharides form a disaccharide in a condensation reaction.



Chem 150, Unit 11: Carbohydrates 21

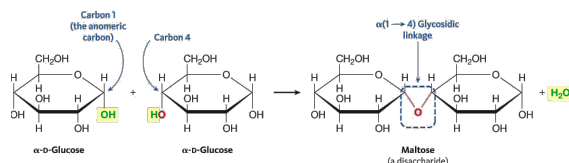
15.3 Disaccharides and the Glycosidic Linkage

- Most monosaccharides are found bonded to other compounds or to other monosaccharides.
- Two monosaccharides form a disaccharide in a condensation reaction.



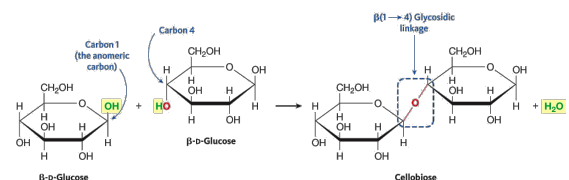
Glycosidic Linkages

- Glycosidic linkages are identified by the carbons that compose them.
- Maltose is a disaccharide with an $\alpha(1\rightarrow4)$ glycosidic linkage. The link is between the OH on carbon 1 (originally α) of a glucose and carbon 4 of another glucose.



$\beta(1\rightarrow4)$ Glycosidic Linkage

- Cellobiose is a disaccharide with a $\beta(1\rightarrow4)$ glycosidic linkage. The link is between the OH on carbon 1 (originally β) of a glucose and carbon 4 of another glucose.

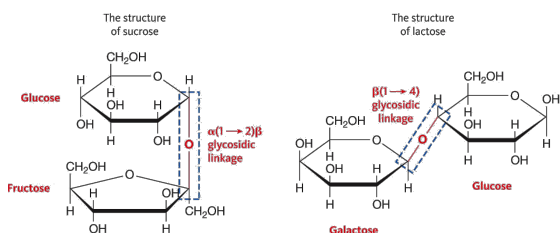


Nutritive Value

- Enzymes in the human digestive system can hydrolyze $\alpha(1\rightarrow4)$ glycosidic linkage but not $\beta(1\rightarrow4)$ glycosidic linkage.
- Therefore maltose, which is derived from starch, can be broken down into glucose and used for energy by humans, while cellobiose, which is derived from cellulose, cannot.

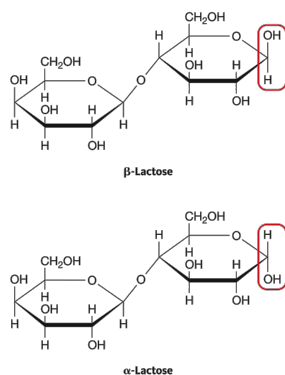
15.4 Common Disaccharides and Polysaccharides

- Table sugar (sucrose) and milk sugar (lactose) are disaccharides.



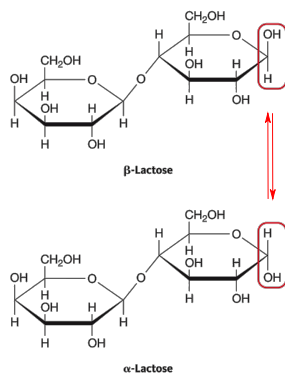
Lactose

- Lactose is a reducing sugar because it contains an hemiacetal group.
- The right hand ring in lactose can undergo **mutarotation** so both α - and β -anomers of lactose exist in solution



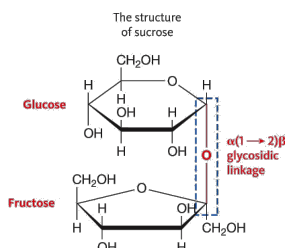
Lactose

- Lactose is a reducing sugar because it contains an hemiacetal group.
- The right hand ring in lactose can undergo **mutarotation** so both α - and β -anomers of lactose exist in solution



Sucrose

- Sucrose does not contain an hemiacetal and therefore is not a reducing sugar.
- As such, it can not undergo mutarotation and there is only one form of sucrose.

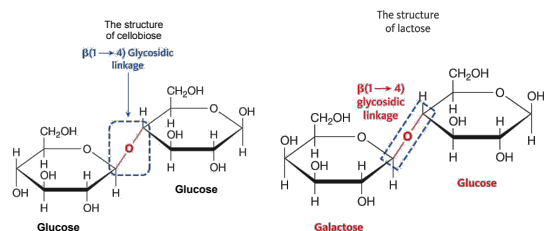


Enzymes

- Sucrase is the enzyme that breaks down sucrose, and the human digestive tract makes ample amounts of sucrase.
- Lactase is the enzyme that breaks down lactose. Infants have sufficient lactase, but after 1-2 years of age humans and most mammals make less lactase, leading to lactose intolerance in some adults.
 - ✦ A genetic mutation in some groups of humans (northern Europeans and certain African groups) allow them to continue to make lactase into adulthood.

15.4 Common Disaccharides and Polysaccharides

- Unlike the $\beta(1 \rightarrow 4)$ glycosidic bond in cellobiose, many people have the enzyme lactase, which allows them to hydrolyze the $\beta(1 \rightarrow 4)$ glycosidic bond in lactose.



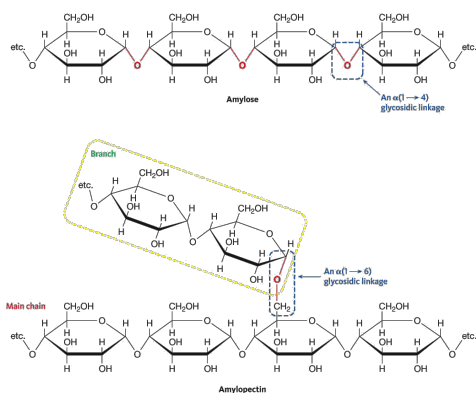
Polysaccharides

- Polysaccharides (complex carbohydrates), are long chains of monosaccharide units.
 - ✦ Storage polysaccharides are energy sources for animals and plants.
 - Examples: Starch and Glycogen
 - ✦ Structural polysaccharides are used to build structural components such as plant fibers and the shells of many animals.
 - Examples: Cellulose and Chitin

Starch

- There are two types of starch, amylose and amylopectin.
- **Amylose** comprises glucose units connected by an $\alpha(1 \rightarrow 4)$ glycosidic linkages.
- **Amylopectin** also comprises glucose units connected by $\alpha(1 \rightarrow 4)$ glycosidic linkages but it also has some $\alpha(1 \rightarrow 6)$ glycosidic linkages, which creates branches every 25 to 30 units.
 - ✦ Many plants, such as rice, potatoes, and bananas, contain starch. Dried starches are often used for energy storage in plants and are difficult to digest, but cooking restores the water and makes them digestible.

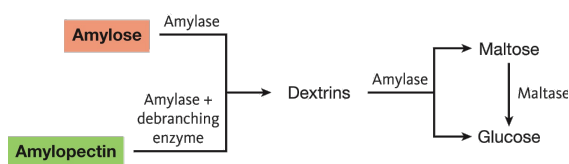
Amylose and Amylopectin



Chem 150, Unit 11: Carbohydrates 32

Digestion of Amylose and Amylopectin

- Amylose is digested using the enzyme amylase.
- Amylopectin requires amylase and an additional debranching enzyme to break the $\alpha(1 \rightarrow 6)$ glycosidic linkage



Chem 150, Unit 11: Carbohydrates 33

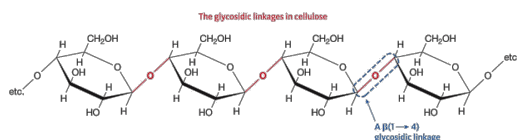
Glycogen

- Glycogen, used in animals as glucose storage, is similar to amylopectin, except glycogen is much larger and has branches occurring every 8-12 glucose units.
- Glycogen is made and stored in the liver and in the muscles.
 - Between meals, the liver breaks down glycogen and releases glucose into the blood to maintain a steady blood glucose level.
 - The muscles store glycogen for future energy needs.

Chem 150, Unit 11: Carbohydrates 34

Cellulose

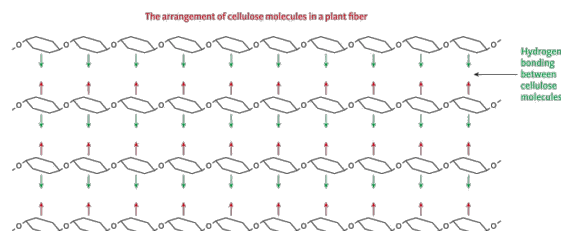
- Cellulose is composed of glucose units with $\beta(1 \rightarrow 4)$ glycosidic linkages.
- Cellulose chains lie side by side and form a huge number of hydrogen bonds, making strong fibers.



Chem 150, Unit 11: Carbohydrates 35

Cellulose

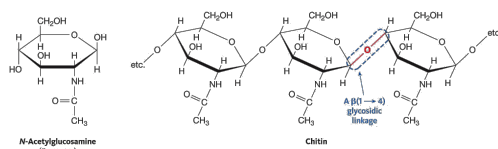
- Cellulose is composed of glucose units with $\beta(1\rightarrow4)$ glycosidic linkages.
- Cellulose chains lie side by side and form a huge number of hydrogen bonds, making strong fibers.



Chem 150, Unit 11: Carbohydrates 35

Chitin

- The shells of insects and crustaceans is made of **chitin**.
- Chitin is similar to cellulose except that it comprises a modified glucose (N-acetylglucosamine).



- Like cellulose, humans are unable to hydrolyze the $\beta(1\rightarrow4)$ glycosidic linkages in chitin, so like cellulose, chitin is not digestible by humans.

Chem 150, Unit 11: Carbohydrates 36

Summary

TABLE 15.3 The Common Disaccharides and Polysaccharides

Compound	Made from	Types of Glycosidic Linkages	Function	Digestible by Humans
Lactose	Galactose + glucose	$\beta(1\rightarrow4)$	Primary carbohydrate in milk	Yes, but many people lose the ability as adults (requires lactase)
Sucrose	Glucose + fructose	$\alpha(1\rightarrow2)\beta$	Primary sugar in plants (fruits, nectar, etc.)	Yes (requires sucrase)
Amylose	Glucose	$\alpha(1\rightarrow4)$	Fuel storage in plants (one of the forms of starch)	Yes (requires amylase)
Amylopectin	Glucose	$\alpha(1\rightarrow4)$ $\alpha(1\rightarrow6)$ at branch points	Fuel storage in plants (one of the forms of starch)	Yes (requires amylase and a debranching enzyme)
Glycogen	Glucose	$\alpha(1\rightarrow4)$ $\alpha(1\rightarrow6)$ at branch points	Fuel storage in animals (sometimes called "animal starch")	Yes (requires amylase and a debranching enzyme)
Cellulose	Glucose	$\beta(1\rightarrow4)$	Structural material in plants	No (requires cellulase)
Chitin	N-acetylglucosamine	$\beta(1\rightarrow4)$	Structural material in insects, crabs, etc.	No (requires several enzymes)

Chem 150, Unit 11: Carbohydrates 37

15.5 Carbohydrate Catabolism

- Carbohydrates are the primary energy source for our bodies, with glucose being the most important monosaccharide that can be used as energy by every cell.
- Glucose is broken down in three steps, but is sometimes written as one simple combustion reaction: $C_6H_{12}O_6 + 6 O_2 \rightarrow 6 CO_2 + 6 H_2O$
- This complete process involves 19 reactions

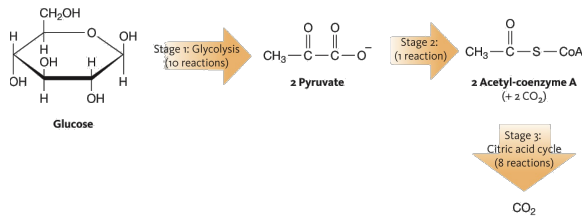
Chem 150, Unit 11: Carbohydrates 38

Glucose Catabolism in Three stages

- Stage 1 Glycolysis: Glucose is broken down into 2 pyruvate ions in 10 reactions. These can be used to build other molecules and can also be converted back to glucose.
- Stage 2: Pyruvate ions are converted to acetyl-coenzyme A. This cannot be converted back to glucose and this reaction commits the cell to break down the glucose
- Stage 3 Citric Acid Cycle (Krebs Cycle): Acetyl-coenzyme A is broken down into CO_2 in a series of 8 reactions.

Chem 150, Unit 11: Carbohydrates 39

Catabolism of Glucose



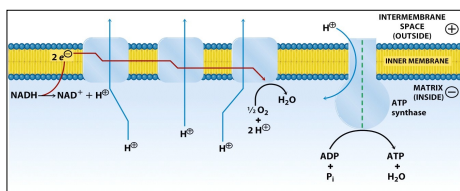
Chem 150, Unit 11: Carbohydrates 40

Energy Stored in High Energy Molecules

- Each stage of glucose oxidation produces molecules that store energy for our bodies to use
 - ATP, reduced NADH and reduced FADH_2 . Our bodies can produce ATP by the oxidizing NADH and FADH_2
 - One molecule of NADH = 2.5 molecules of ATP
 - One molecule of FADH_2 = 1.5 molecules of ATP

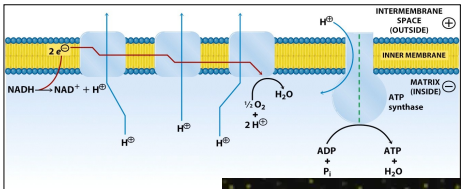
Chem 150, Unit 11: Carbohydrates 41

Electron Transport Chain and ATP Synthase



Chem 150, Unit 11: Carbohydrates 42

Electron Transport Chain and ATP Synthase



Electron Transport Chain and ATP Synthase



High energy molecules produced during glucose catabolism

TABLE 15.4 High-energy Molecules Produced During Glucose Catabolism

Stage	Number of High-energy Molecules Produced	Total Number of High-Energy Molecules per Molecule of Glucose	Total ATP Yield
1 (glycolysis)	2 ATP 2 NADH	2 ATP 2 NADH	7
2	1 NADH per pyruvate ion	2 NADH	5
3 (citric acid cycle)	1 ATP 3 NADH 1 FADH ₂ } per acetyl-CoA	2 ATP 6 NADH 2 FADH ₂	20
TOTAL		4 ATP 10 NADH 2 FADH ₂	32

High energy molecules produced during glucose catabolism

TABLE 15.4 High-energy Molecules Produced During Glucose Catabolism

Stage	Number of High-energy Molecules Produced	Total Number of High-Energy Molecules per Molecule of Glucose	Total ATP Yield
1 (glycolysis)	2 ATP 2 NADH	2 ATP 2 NADH	7
2	1 NADH per pyruvate ion	2 NADH	5
3 (citric acid cycle)	1 ATP 3 NADH 1 FADH ₂ } per acetyl-CoA	2 ATP 6 NADH 2 FADH ₂	20
TOTAL		4 ATP 10 NADH 2 FADH ₂	32

O₂ is used to reoxidize the NADH and FADH₂ to NAD⁺ and FAD

High energy molecules produced during glucose catabolism

TABLE 15.4 High-energy Molecules Produced During Glucose Catabolism

Stage	Number of High-energy Molecules Produced	Total Number of High-Energy Molecules per Molecule of Glucose	Total ATP Yield
1 (glycolysis)	2 ATP 2 NADH	2 ATP 2 NADH	7

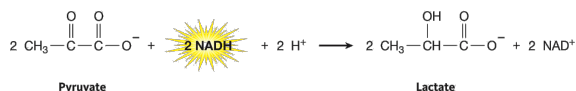
Without O_2 , the pyruvate formed from glycolysis does not go on to enter Stages 2 and 3.

O_2 is used to reoxidize the NADH and $FADH_2$ to NAD^+ and FAD

Chem 150, Unit 11: Carbohydrates 43

Lactic Acid Fermentation

- Fermentations are anaerobic, meaning they do not require oxygen. When we need an immediate source for ATP for a brief exertion, our bodies can use lactic acid fermentation.
- Muscles use this pathway for energy, and lactate build-up in muscles is responsible for soreness.
- The pathway picks up with pyruvate after the 10 reactions of glycolysis



Chem 150, Unit 11: Carbohydrates 44

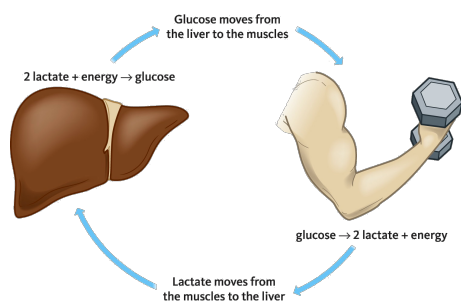
Lactic Acid Fermentation

- The 2 NADH that were produced in glycolysis are consumed in lactic acid fermentation, so the only high energy products that are formed from pyruvate in lactic acid fermentation are 2 molecules of ATP.
- Therefore, it is not very efficient at getting energy from glucose, but is a fast process ideal for intense muscle effort.

Chem 150, Unit 11: Carbohydrates 45

Cori Cycle

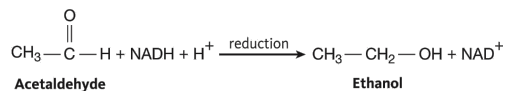
- The liver converts lactate from the muscles back to glucose



Chem 150, Unit 11: Carbohydrates 46

Alcoholic Fermentation

- Yeast and some bacteria convert glucose into ethanol and carbon dioxide, a two step process which also consumes the NADH produced in glycolysis.



Chem 150, Unit 11: Carbohydrates 47

Next Up

- Unit 12 - Lipids and Membranes
- Exam III - Units 9-11

Chem 150, Unit 11: Carbohydrates 48